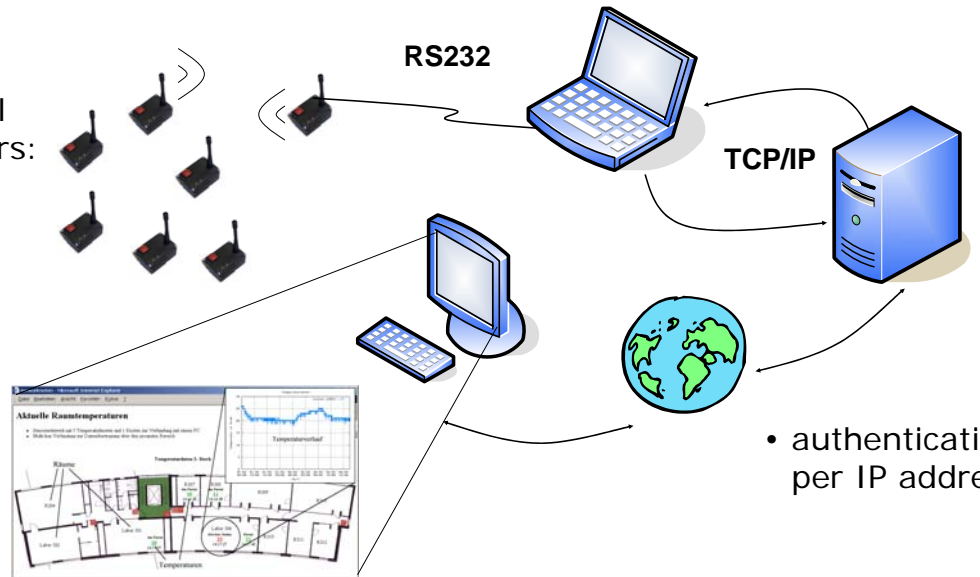


Web-based Monitoring

- network nodes based on CC1010 RF transceivers
- network bridge attached to host PC
- server provides access to the world wide web

- purpose: trace and monitor environmental and process parameters:
 - temperature
 - humidity
 - intensity of light
 - gas concentration

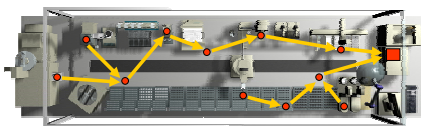


- common web interface
- visualization / control

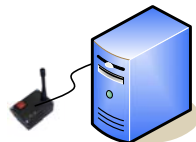
- authentication per IP address

Service Oriented Architecture

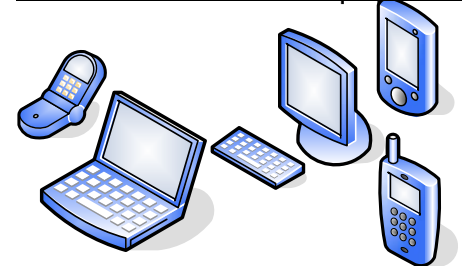
Fixed Sensors in Processing Applications



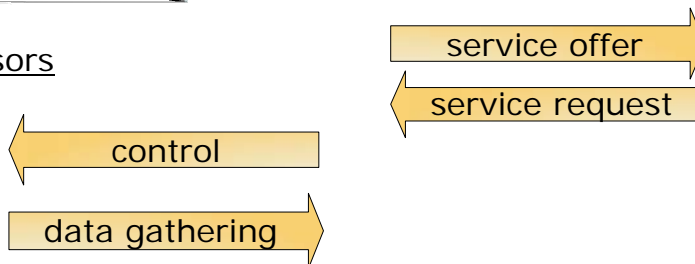
Gateway



Enduser Terminal Equipment



Mobile Sensors



- supporting various technologies (Bluetooth, Ethernet, WLAN, IR)
- offering service functionalities for different access levels, such as monitoring, controlling, bluetrack, directing and supervising functions
- automatically connecting to end terminals

- appropriate visualizations
- automatically checking available services
- user attendance